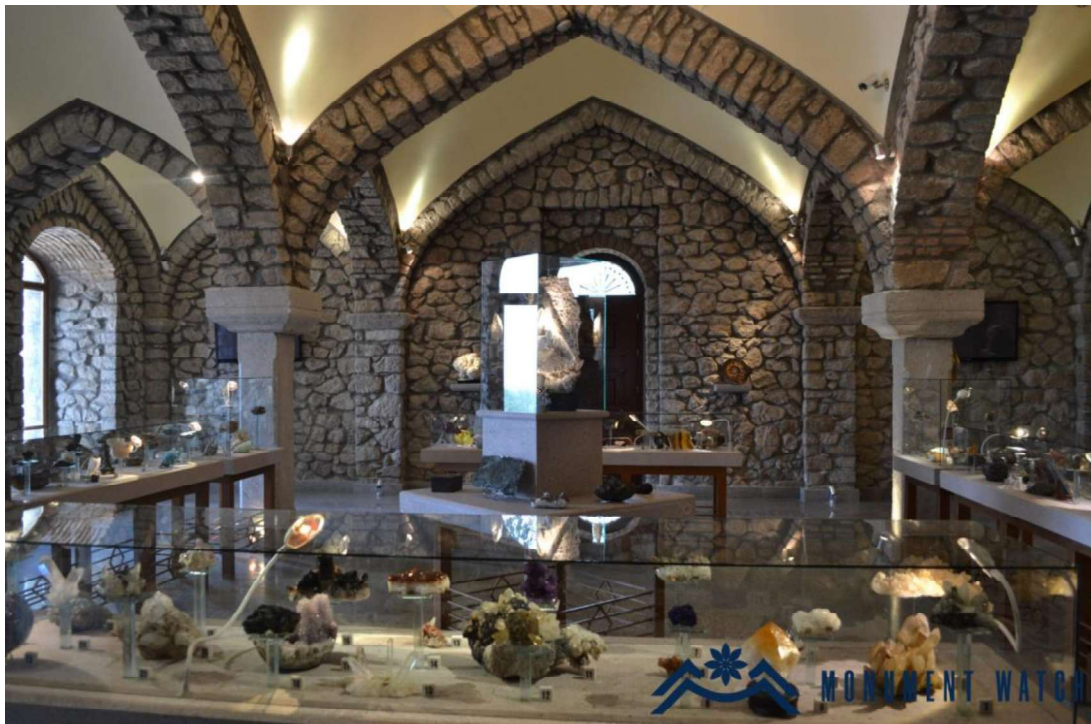


Figures 1: Archival Photograph Showing Neighborhood Mosque in the 1980s¹



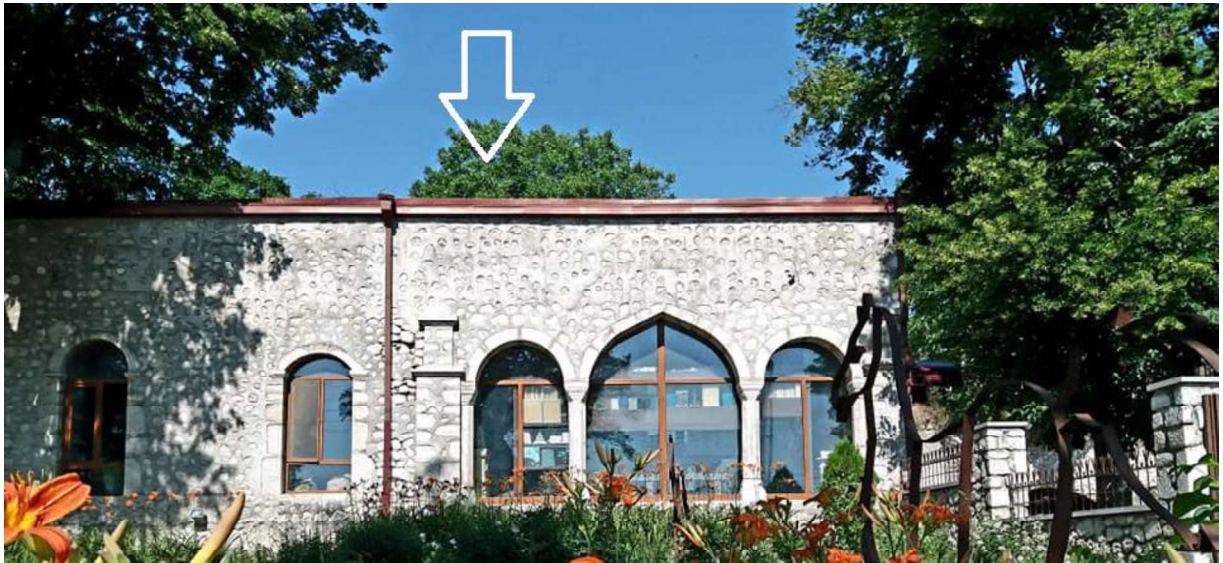
Figure 3: Interior of the Mosque After Being Converted into the so-called “Stone Museum” in 2014²



¹ See Karabakh Center, “Taza Mahalla Mosque”, <https://karabakh.center/en/cd-269/Shusha/Taza-Mahalla-Mosque>.

² Monument Watch, “The State Museum of Geology named after Grigor Gabrielyants in Shushi”, <https://monumentwatch.org/en/2023/05/09/the-state-museum-of-geology-named-after-grigor-gabrielyants-in-shushi/>.

Figure 3: Photograph of the Mosque After Being Converted into the Stone Museum, with White Arrow Marking the Former Location of the Mosque's *Guldasta*



Figures 5 and 6: Photographs of the Mosque Taken on 6 September 2023

